

Valve
Actuation

Steam

Instruments

Hot Water

Industrial
PVF



**YOUR MOST
VALUABLE PARTNER**

**FOR TEKTROL
FLOWMETERS**

PipeValves
Since 1963

www.PipeValves.com
800.467.7122

Warning: Do not use this literature in place of reading, understanding, and following the manufacturer's spec sheets and operator's manual instructions which are available on their website.



TEKTROL

Coriolis Flowmeter

Benefits & features:

- Measurement of mass flow, density, temperature and volume flow
- Suitable for aggressive and contaminated media
- Measurement and display of percent water-cut for oil/water mixtures
- High rotation frequency and well-balanced measuring tubes
- Higher Sampling and Digital Filtering
- No moving parts
- Can be used in extreme harsh conditions
- High accuracy for measuring mass flow, density, temperature and volume flow

Information:

- Service: Liquids and Gas
- Size:
 - U-Shaped: 1-1/2" to 8"
 - Microbend: 1/2" to 8"
 - Triangle: 1/2" to 1"
- Temperature Limits: -58 degrees F to 257 degrees F



Electromagnetic Flowmeter

Benefits & features:

- Wide range of nominal diameter Size ½" to 28" (15 mm to 700 mm) with IP68 protection
- Easy maintenance due to no moving parts
- Uninfluenced by temperature, pressure, viscosity, and density
- Used for wide application, can measure conductive fluid, without reference to fibre, solid or suspending material contained in liquid
- High turndown ratio up to 1:100
- It features high intelligence, with back light LCD display, menu setting control, three grades password protection,
- two-way measuring, slight signal removal, auto flow compensation, and other function.
- Features high intelligence, which ensure empty pipe detection, self-detection, self-diagnostic functions, and safety alarms for upper and lower limit
- Features SMART excitation, which ensures zero-point stability, high reliability, and low power consumption
- Lining and electrode available in various materials which can measure nearly all conductive fluids
- It has multiple signal output, pulse, Modbus RS485 or HART® or 4 to 20 mA
- The power supply system has good voltage vibration ability
- Meters Batching and Blending Totalization

Information:

- Service: Compatible conductive liquids
- Pressure limit: 150 psi
- Mounting orientation: Horizontal or vertical



TEKTROL

Vortex Flowmeter

Benefits & features:

- Tek-Vor 1300C has lower measuring limit, better stability, and accuracy
- Tek-Vor 1300C has a unique dual sensor design
- Special signal processing method provides better antivibration
- More reliable performance
- Requires less maintenance
- Tek-Vor 1300C can calculate density and mass flow rate without mass flow computer
- Tek-Vor 1300C has self-diagnostic function
- Optional multivariable version is available, has in-built RTD

and pressure sensor that can measure and display flow rate, velocity, temperature, pressure, mass flowrate, and density

- Self-diagnostic function is available

Information:

- Service: Liquids, gas, steam
- Mounting orientation: Horizontal
- Temperature limits: -40 degrees F to 662 degrees F



Thermal Mass Flowmeter

Benefits & features:

- Dual line LCD display with 3 setting button
- No pressure loss and it can be used on pipes from 1" to 20"
- It has more compact design, which means smaller enclosure and thinner insertion tube probe
- Measure mass flow and standard flow directly
- It has self-diagnostic function
- It has high accuracy data acquisition circuit
- High effective design of power supply
- Wide Turndown ratio 100:1
- Due to the thin diameter probe, it can be installed in pipe very easily and without stopping all the process
- Cost-effective model

Information:

- Service: Air and Nitrogen
- Mounting orientation: Horizontal or vertical
- Temperature limits: -40 degrees F to 302 degrees F
- Max pressure limit: 232 PSI



Ultrasonic Clamp-on Flowmeter

Benefits & features:

- Operates with clamp-on and flow-cell
- Tek-Clamp 1200A Ultrasonic Clamp On Flowmeter is designed to measure the fluid velocity of liquid in a full or closed pipe.
- It is a measurement system which is both easy to install and use.
- The Tek-Clamp 1200A operates according to the difference in the Transit Time of Flight measured and determines the flow velocity by measuring the travel time of a pulse from one transducer to the next.

Information:

- Display: LCD
- Size: Pipe diameters from 1/2" to 28"
- Accuracy: Better than +/- 1%
- Temperature limits: 32 degrees F to 320 degrees F



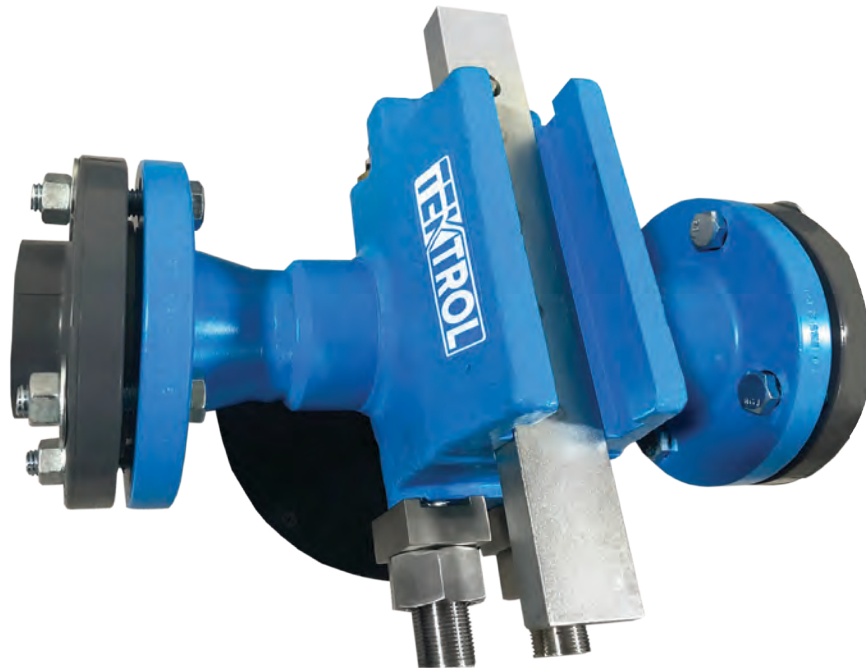
Ultrasonic Clamp-on Flowmeter

Benefits & features:

- Operates with clamp-on and flow-cell
- Tek-Clamp 1200A Ultrasonic Clamp On Flowmeter is designed to measure the fluid velocity of liquid in a full or closed pipe.
- It is a measurement system which is both easy to install and use.
- The Tek-Clamp 1200A operates according to the difference in the Transit Time of Flight measured and determines the flow velocity by measuring the travel time of a pulse from one transducer to the next.

Information:

- Display: LCD
- Size: Pipe diameters from 1/2" to 28"
- Accuracy: Better than +/- 1%
- Temperature limits: 32 degrees F to 320 degrees F



Orifice Flowmeter - Single Chamber

Description

Tek-DP 1610A Single Chamber Orifice Fittings are the single chamber devices designed for precise flow measurement in oil and gas applications with a simple plate removal technique. These fittings are suitable for liquid flow measurement as well. Tek-Trol ensures that each single chamber fitting undergoes rigorous testing under pressure conditions to provide maximum safety to the user and the system.

Information:

- Installed in vertical or horizontal lines
- Size: Pipe diameters from 2" to 48"

Benefits & features:

- Highly reliable and field-repairable
- Rack and pinion configuration for easy plate replacement
- Ensures plate remove without spreading the flanges
- Short operational downtime
- Eliminates liquid or gas leakage possibility
- Offers versatility of line sizes



Orifice Flowmeter - Dual Chamber

Description

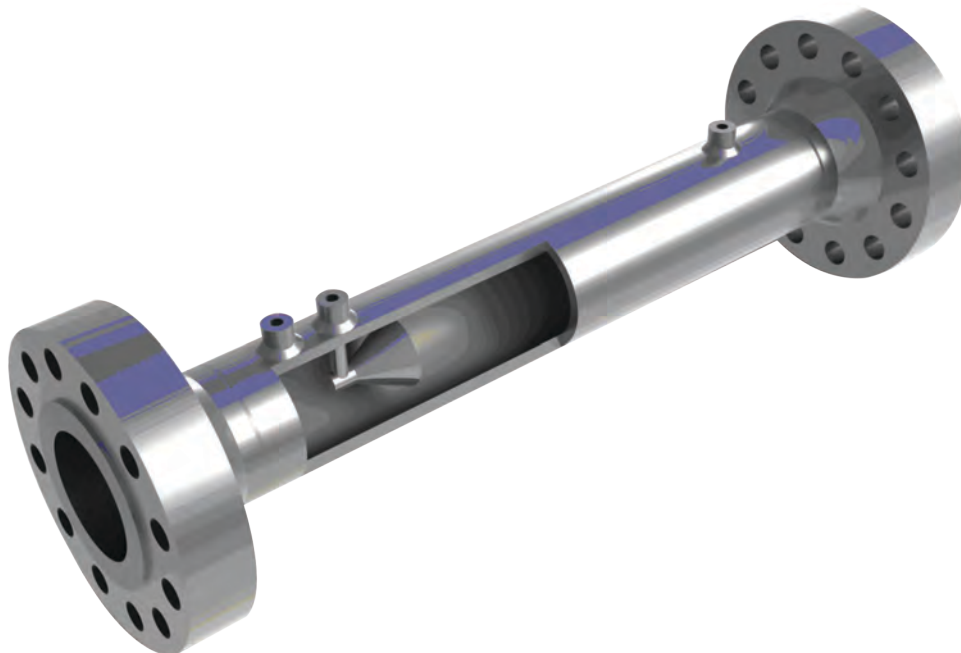
Tek-DP 1610B Dual Chamber Orifice Fittings are highly reliable dual chamber devices constructed for flow measurement in oils, gases, and liquids. The field-proven dual chamber technology ensures extremely simple, fast and safe method of changing orifice plates under pressure without flow interruption. These orifice fittings are pivotal in the processes where a shutdown time is impractical.

Information:

- The first chamber of the dual chamber orifice fittings holds the orifice plate securely in the flow line.
- The second chamber provides room to withdraw the orifice plate for inspection.
- With the help of a spindle, the operator can easily move the orifice plate from the first chamber to the second chamber without interrupting the pressurized line.

Benefits & features:

- Highly reliable and field-repairable
- Ensures fast and safe plate replacement
- Requires no breaking apart or depressurizing the flow line
- No operational downtime
- Eliminates liquid or gas leakage possibility
- Offers versatility of line sizes



Cone Flowmeter

Description

Tek-DP 1620A Cone Flowmeter is an advanced differential pressure instrument, which is ideal for use with liquid, steam, gas media in rugged conditions where accuracy, low maintenance, cost are important.

Information:

- Service: Liquids and Gas
- Sizes: 3" to 48" for any pipe schedule

Benefits & features:

- Extremely immune to flow disturbance
- No moving parts
- Low operating cost
- Calibrated uncertainty up to $\pm 0.5\%$
- Accurate, reliable, cost effective



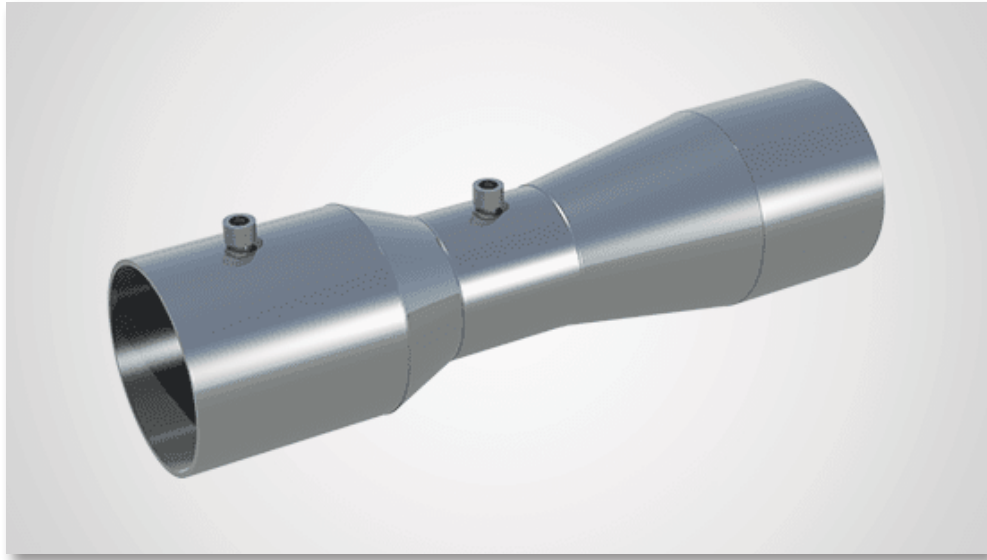
Flow Nozzles

Benefits & features:

- Suitable for high temperature and high-pressure applications
- Higher mechanical strength
- Measures flow rate containing solid particles
- Suitable for high speed flowing fluids

Information:

- Service: Liquids and Gas
- Mounting Types: Weld in type, holding ring type, flange type



Venturi Meter

Benefits & features:

- It is simple, robust, reliable
- No moving parts
- Low permanent pressure loss
- Low operating cost
- Accurate, reliable, cost effective

Information:

- Service - Liquids
 - Size - 3" to 48" for any pipe schedule
 - Flanges - #150 – #2500
 - Material - All standard materials available
 - DP Transmitter - Tek-Bar 3110A
 - Calibrated Uncertainty - 1%
- Service - Gas
 - Size - 3" to 24" for any pipe schedule
 - Flanges - #150 – #2500
 - Material - All standard materials available
 - DP Transmitter - Tek-Bar 3110A



Wedges

Benefits & features:

- Compact and robust design with no moving parts
- Bidirectional flow possible
- No clogging risk, self-cleaning
- Accurate flow metering for highly viscous fluids, slurries and suspended solids
- Minimal permanent pressure loss resulting in energy savings
- Accuracy $\leq \pm 0.5\%$ of the actual flow rate (Calibrated)
- Repeatability 0.2 %
- Available for all pipe sizes and in a wide range of materials












Information:

- Sizes: 2" to 36", larger sizes upon request
- Pressure: 150 PSI to 2500 PSI
- Operating Temperature:
 - Standard: -20 degrees F to 100 degrees F
 - Optional: -40 degrees F to 1200 degrees F



Valuable Services

Pipe Valves offers the quality products and the best services to improve your bottom-line performance.

-  Pipe Shop: We cut, bevel, groove, and thread
-  Energy audits, steam trap surveys, live steam lab demonstrations
-  Daily local truck routes, emergency delivery options
-  Phone, counter, email, fax and e-commerce ordering options
-  Express sales counter pickup and tool rental
-  Vendor Managed Inventory options customized to your needs
-  Product specialists and staff engineers assist with problem solving
-  Kitting Services - we can bag and tag to your specifications
-  Bin management, bar code scanning and labeling solutions available
-  PV University Classes, Where Seeing Is Believing: Actuation, Valves, Steam
-  24/7 emergency service available in many areas

800.467.7122



www.PipeValves.com

Warning: Do not use this literature in place of reading, understanding, and following the manufacturer's spec sheets and operator's manual instructions which are available on their website.